

THIS INSTRUMENT PREPARED BY
DAVID P. LINDLEY

CAULFIELD & WHEELER, INC.

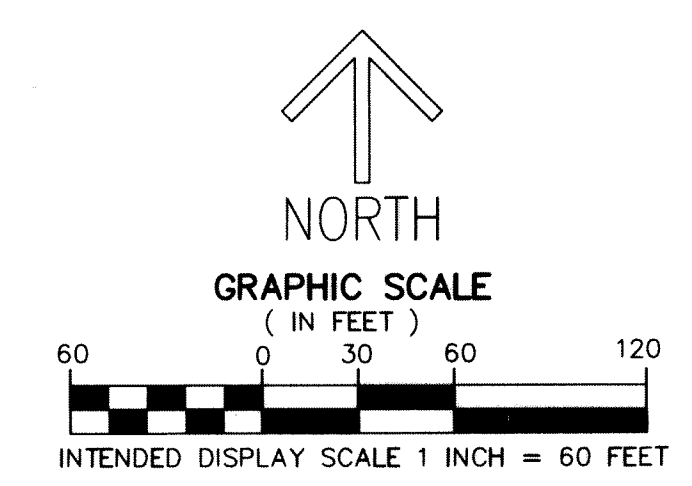
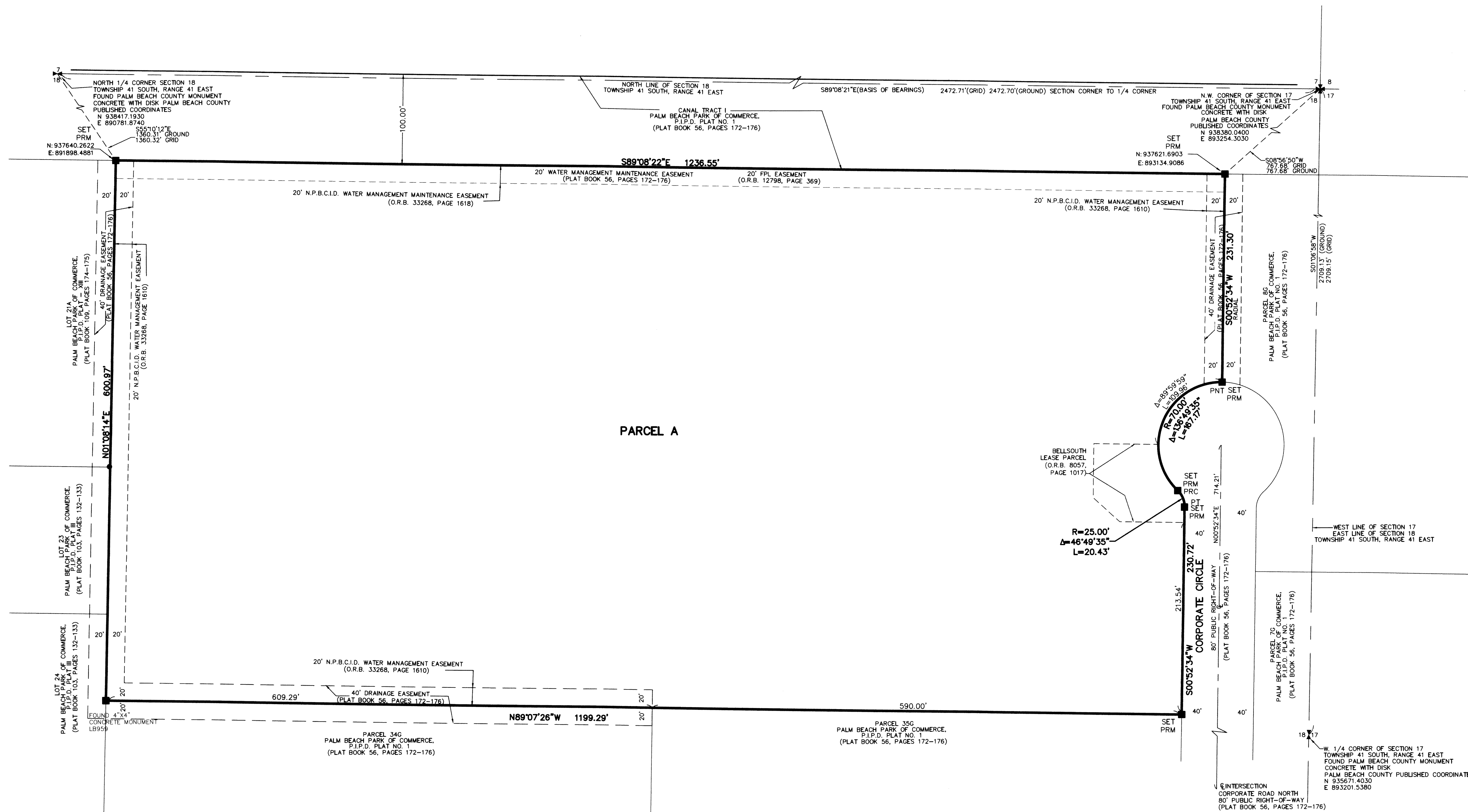
SURVEYORS - ENGINEERS - PLANNERS
7900 GLADES ROAD, SUITE 100
BOCA RATON, FLORIDA 33434 - (561)392-1991

PALM BEACH PARK OF COMMERCE, P.I.P.D. - PLAT 30

BEING A REPLAT OF LOTS 32G AND 33G, PALM BEACH PARK OF COMMERCE, P.I.P.D. PLAT NO.1,
ACCORDING TO THE PLAT THEREOF, AS RECORDED IN PLAT BOOK 56, PAGES 172-176 OF THE PUBLIC RECORDS OF PALM BEACH COUNTY, FLORIDA.
LYING IN SECTION 18, TOWNSHIP 41 SOUTH, RANGE 41 EAST, PALM BEACH COUNTY, FLORIDA.

6

SHEET 2 OF 2



NOTES
COORDINATES, BEARINGS AND DISTANCES
COORDINATES SHOWN ARE GRID
DATUM = NAD 83 1990 ADJUSTMENT
ZONE = FLORIDA EAST
LINEAR UNIT = US SURVEY FEET
COORDINATE SYSTEM 1983 STATE PLANE
TRANSVERSE MERCATOR PROJECTION
ALL DISTANCES ARE GROUND, UNLESS OTHERWISE NOTED
SCALE FACTOR = 1.0000070
GROUND DISTANCE X SCALE FACTOR = GRID DISTANCE
BEARINGS AS SHOWN HEREON ARE GRID DATUM,
NAD 83 1990 ADJUSTMENT, FLORIDA EAST ZONE.

LEGEND/ABBREVIATIONS

- ⊕ - CENTERLINE
- Δ - DELTA (CENTRAL ANGLE)
- CB - CHORD BEARING
- CD - CHORD DISTANCE
- E - EASTING (WHEN USED WITH COORDINATES)
- FDOT - FLORIDA DEPARTMENT OF TRANSPORTATION
- FPL - FLORIDA POWER & LIGHT COMPANY
- L - ARC LENGTH
- LB - LICENSED BUSINESS
- N - NORTHING (WHEN USED WITH COORDINATES)
- N.P.B.C.I.D. - NORTHERN PALM BEACH COUNTY IMPROVEMENT DISTRICT
- O.R.B. - OFFICIAL RECORD BOOK
- P.I.P.D. - PLANNED INDUSTRIAL PARK DEVELOPMENT
- PC - POINT OF CURVATURE
- PCC - POINT OF COMPOUND CURVATURE
- PNT - POINT OF NON-TANGENCY
- PRC - POINT OF REVERSE CURVATURE
- PT - POINT OF TANGENCY
- R - RADIUS
- PRM - DENOTES PERMANENT REFERENCE MONUMENT FOUND 4" x 4" x 24" CONCRETE MONUMENT WITH ALUMINUM DISK STAMPED "C&W PRM LB3591"
- △ - DENOTES HORIZONTAL CONTROL POINT